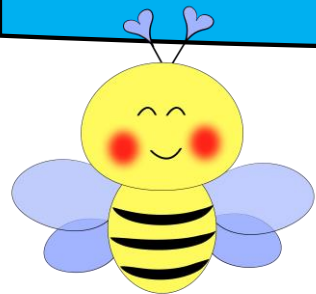


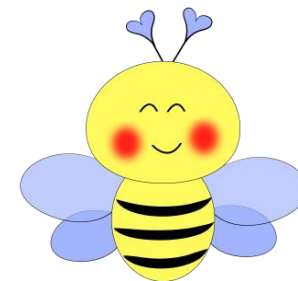
Word Wall



Terms for using this resource

Please do NOT copy or share this resource in any format, including on the internet.

Please direct people to the website so they can purchase/download their own copy.



This resource is copyright to ELSA Support.
Thank you for your co-operation on this.

[ELSA Website](#)

[ELSA Facebook Page](#)

[ELSA Twitter](#)

[ELSA Facebook TA Group](#)

[ELSA Pinterest](#)

[ELSA Parent group](#)

[ELSA Health and Wellbeing group](#)

[ELSA TPT Store](#)

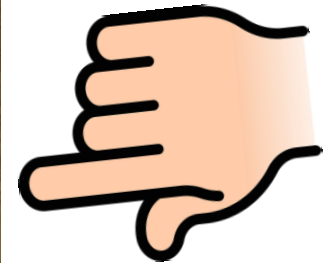
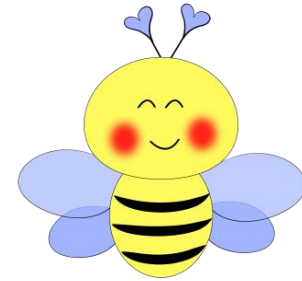
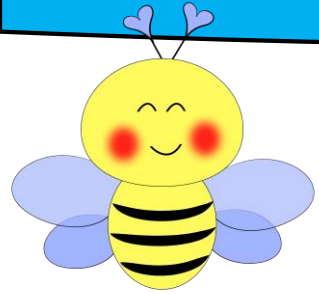
[ELSA Tes Store](#)



Instagram: [elsa_support](#)

Facebook ELSA Secret Group: Contact info@elsa-support.co.uk for your invitation

More Resources



Building Foundations – word wall

This is a very versatile resource that can be used for many different topics. I have given an example of one for friendship but consider trying:

- Happiness
- Relaxation
- Coping skills
- Self-esteem
- Respect
- My emotions
 - Anger
 - Anxiety
 - Jealousy
 - Fear
 - Worries
 - Manners
 - Grief

And so on...

This is a great way to explore an area in more detail. Prompt if the child gets stuck. There is also a sheet for children to draw something associated with the question. This could be used one to one or with a group of children to find out all their ideas. Print onto A3 if using for a group.

Building Foundations

Word Wall

What does

A good friend

mean to you?

Write down a word or phrase in each brick connected with the question

loyal

trusting

listening ear

caring

dependable

available

cheerful

honest

kind

good fun

happy

connected

considerate

co-operative

faithful

forgiving

available

things in
common

Building Foundations

Word Wall

What does

mean to you?

Write down a word or phrase in each brick connected with the question.

Building Foundations

Picture Wall

What does

mean to you?

Create a drawing on each brick associated with the question
