



TERMS OF USE

This resource and its content is copyright of Elsa-Support Ltd.
©Elsa-Support 2021. All rights reserved.

All free products on this site are subject to a **Creative Commons Copyright Licence**. You are free to copy, distribute, display, and perform the work under the following conditions:

Attribution: You must give the original author credit - that is **Elsa-Support**, and our copyright labels must remain on the resource.

Non-Commercial: You may **not** use this work for commercial purposes. **You cannot sell this work or use it for financial gain.**

No Derivative Works: You may **not** alter, transform, or build upon this work. **You must not change our work in anyway.**

Thank you for abiding by copyright law.



www.elsa-support.co.uk



Some of the clipart used in making this resource is licensed to us from the following:

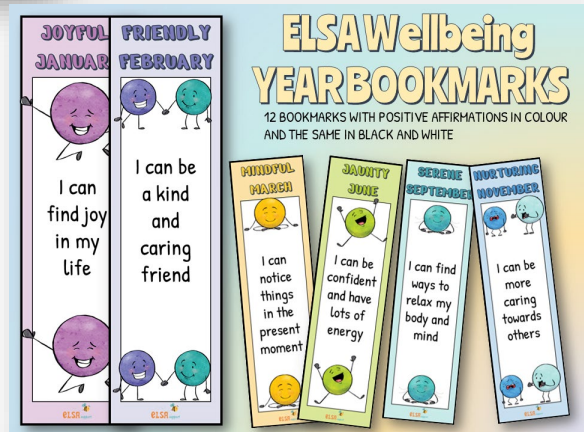
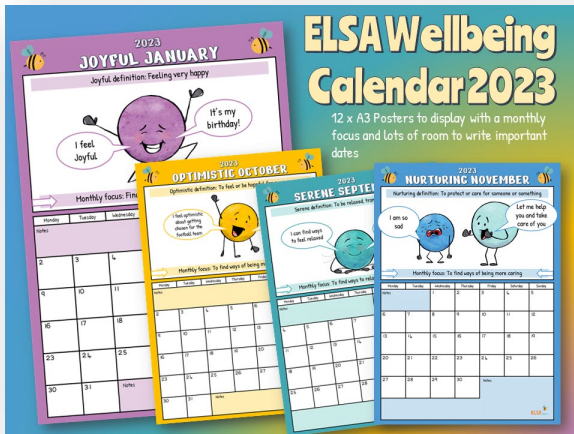




Other resources you will LOVE!



Please click the image to take you to this related and relevant resource:



www.elsa-support.co.uk




Wellbeing Year Dependable December

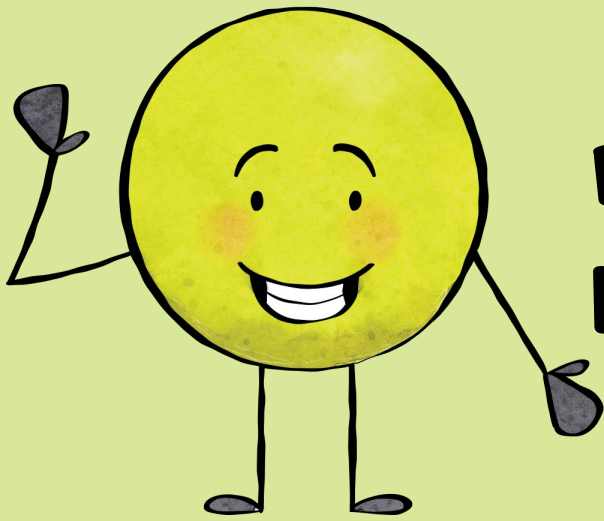
Monthly focus	To explore being dependable	Resources	Circle time card, Poster, Worksheet for each pupil.
----------------------	-----------------------------	------------------	---

Run the group as a circle time. This would work for a small group or for larger groups too.

Warm up	<p>I can depend on you game You need the 'Responsibility holder' card printed to pass around the circle. Give the card to the person on your right. They become the responsibility holder. They have responsibility for keeping the card safe. They need to pass the responsibility to the person on their right. Continue around the circle so each person has the opportunity to be the responsibility holder. Highlight how the responsibility holder needs to depend on the person next to them to take the responsibility for the card. What would happen if there wasn't anyone there or the person refused to take the object from them? Explain that being dependable means that someone is always there when you need them, and you can trust them to do what they say they will do. It's like having a friend who you know will help you when you need it.</p>
----------------	--

Activity	<p>State the learning objective - To explore being dependable</p> <p>Use the bee poster to discuss being dependable. Read and discuss each statement and relate it to the pupils and their lives.</p> <p>Bees do their jobs every day. They collect nectar and pollen and take care of their home, the hive, without stopping. Being dependable is doing your tasks and keeping your promises every day.</p> <p>Some bees collect food, some take care of the little bees, and others keep the hive safe. Being dependable means you do your jobs responsibly.</p> <p>Bees are like a big team that works together to get things done. Each bee has a special job, and they help each other. It's like when you and your friends play together, and everyone has a role to make the game fun. Being dependable means you're a good team player, and everyone takes part and does their job.</p> <p>Bees are like builders who create their homes and take care of them for a very long time. They don't give up on their home. Being dependable is like making a promise to help your family and friends or a long time.</p> <p>Bees are like super protectors for their home and babies. They keep them safe from any danger. Being dependable means you take care of your little brothers or sisters and make sure your friends are safe when they need help.</p> <p>Pupils can now fill in their own hive to show how they are dependable.</p>
-----------------	---

<p>Review</p> 	<p>What have you learnt today? Do you think you will be able to be more dependable?</p>
---	---



Responsibility holder

©Elsa-Support
www.elsa-support.co.uk

Dependable Bees

Bees depend on each other to keep the hive going. If bees disappeared, we'd lose fruits and veggies they help grow, making food cost more. Animals who eat these foods would struggle, and our planet's balance would be off. We depend on bees to do their jobs. Let's look at how bees work as a community and see how it isn't that different to how we should behave.

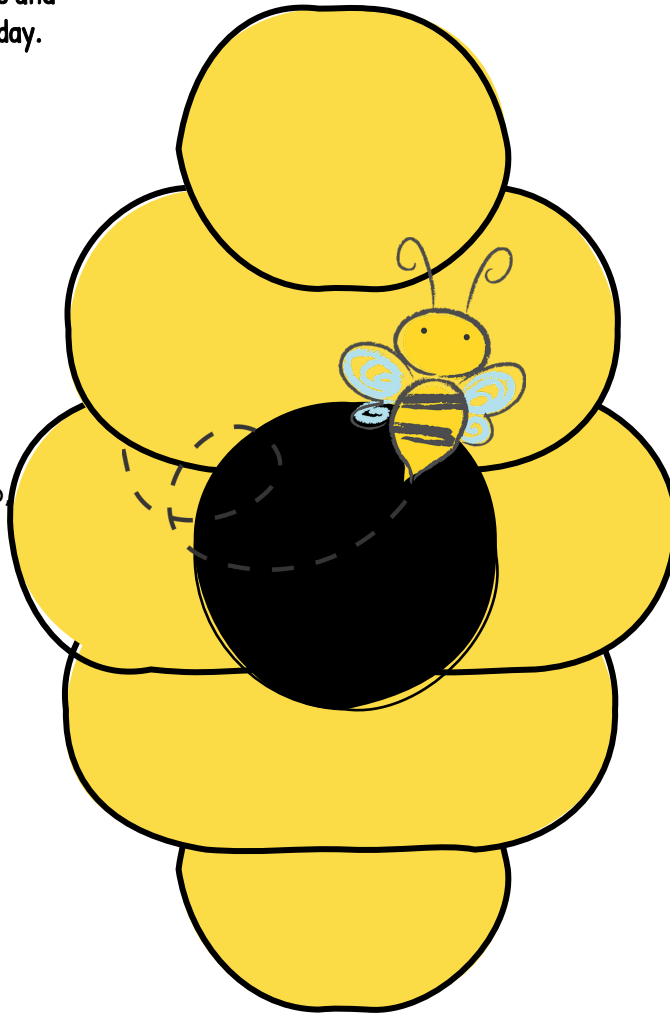
Bees do their jobs every day. They collect nectar and pollen and take care of their home, the hive, without stopping. **Being dependable is doing your tasks and keeping your promises every day.**



Some bees collect food, some take care of the little bees, and others keep the hive safe. **Being dependable means you do your jobs responsibly.**



Bees are like a big team that works together to get things done. Each bee has a special job and they help each other. It's like when you and your friends play together, and everyone has a role to make the game fun. **Being dependable means you're a good team player, and everyone takes part and does their job.**



Bees are like builders who create their homes and take care of them for a very long time. They don't give up on their home. **Being dependable is like making a promise to help your family and friends or a long time.**



Bees are like super protectors for their home and babies. They keep them safe from any danger. **Being dependable means you take care of your little brothers or sisters and make sure your friends are safe when they need help.**



Dependable ME!

Fill the hive with all the things you do to be dependable. What jobs do you do? How do you take care of others? Can others rely on you to do something? Are you always there for your friends?

This is me!