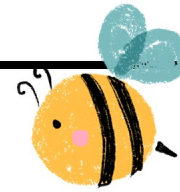


TERMS OF USE



This resource is **copyright ©ELSA Support**

All free products on this site are subject to a **Creative Commons copyright licence**. You are free to copy, distribute, display, and perform the work under the following conditions:

Attribution: You must give the original author credit (**That is ©ELSA Support**)

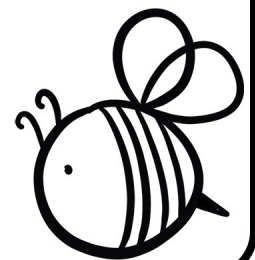
Non-Commercial: You may **not** use this work for commercial purposes (**You cannot sell this work or use it for financial gain**)

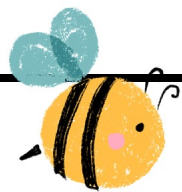
No Derivative Works: You may **not** alter, transform, or build upon this work (**You must not change our work in anyway**)

Thank you for abiding by copyright law.



www.elsa-support.co.uk

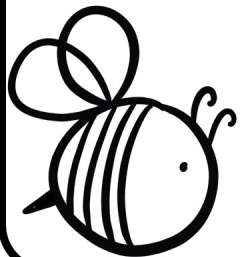
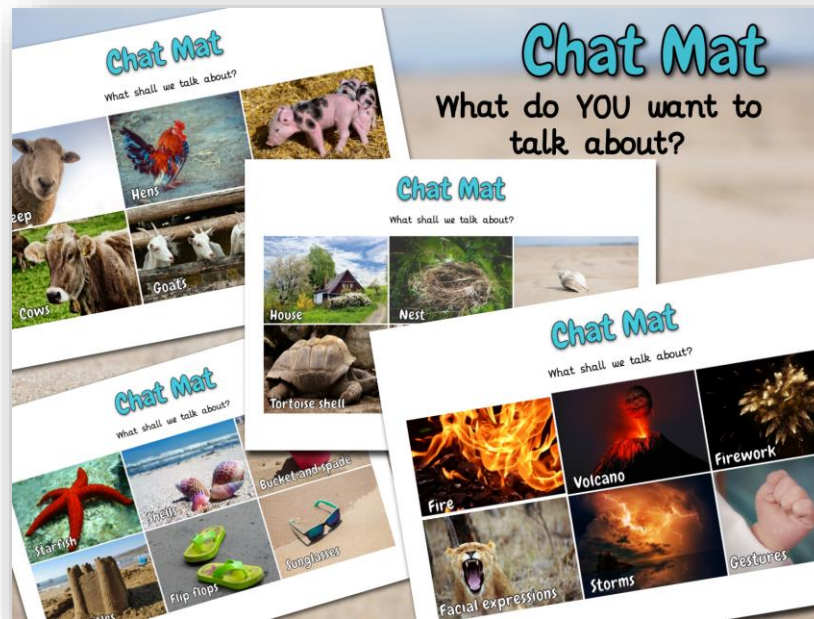




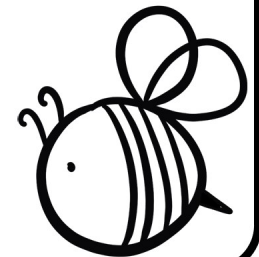
Other resources you will LOVE!



Please click the image to take you to this related and relevant resource:



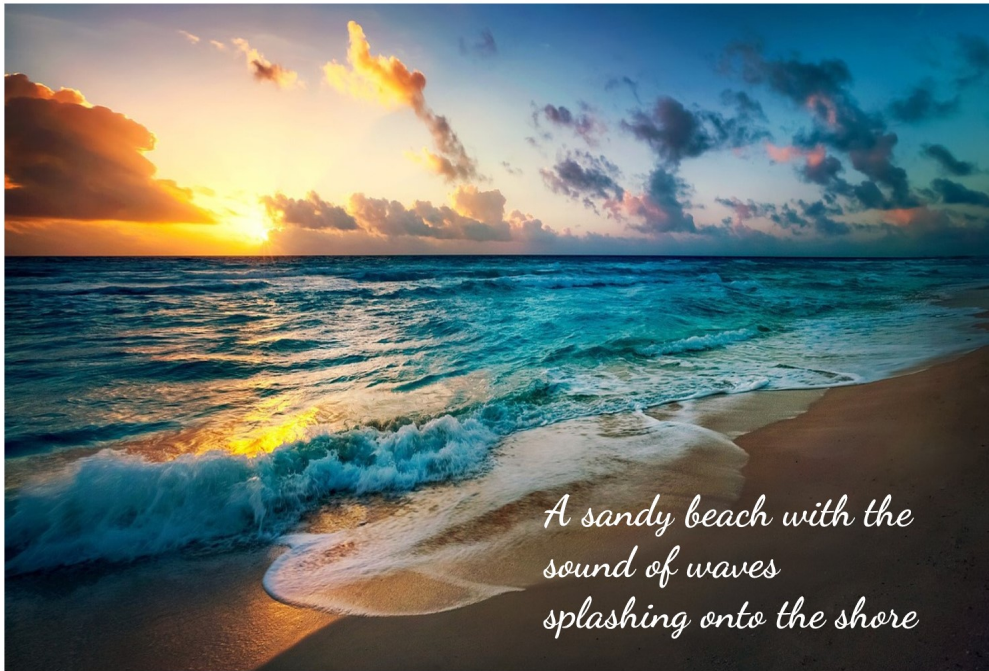
www.elsa-support.co.uk



SAFE PLACE

Imagine a place where you feel safe. No one can bother you. No one can talk to you. You love your safe place. You close your eyes and you can see your safe place. Use your senses to see, smell, hear, feel and taste your safe place. Draw your safe place below putting in as much detail as you can. This can be a place that you know or a place that you have in your imagination. Use some of the images to inspire you...

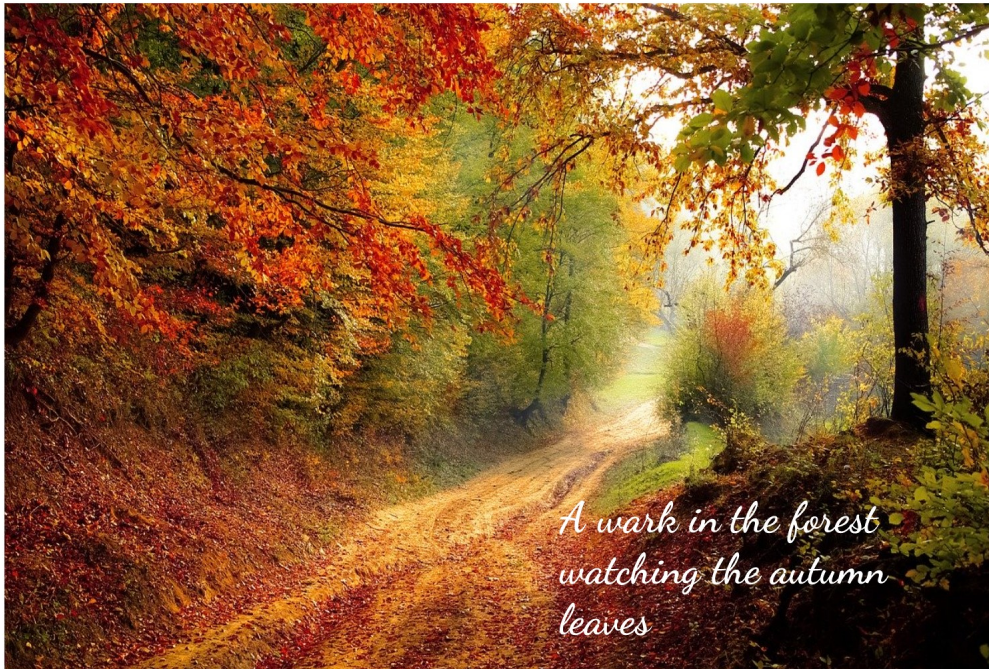




*A sandy beach with the
sound of waves
splashing onto the shore*



*A lake on a calm and
warm day. Watching
the reflections of the
trees and clouds.*



*A walk in the forest
watching the autumn
leaves*



*Watching a movie in front of
a roaring fire, drinking hot
chocolate and eating pop corn.*